



Seed  
GLOBAL HEALTH



# The Deteriorating Patient in the ICU

Dr. Cornelius S., Doreen A.O., Rebecca A., Winnie N., Charles E., Brendah A., Catherine N. Erasmus E.O.

# Educational Goal

- To enable learners to gain reflective experience in the management of acute life-threatening conditions

# Session Objectives

## CRM Objectives

- ICU preparation & early team role assignment
- Handover communication
- Closed-loop communication & escalation of concerns to the senior team
- Multidisciplinary team engagement

## Medical Objectives

- Perform focused assessment
- Recognize clinical signs of increased ICP
- Apply protocol-based ICP-lowering measures
- Prepare for emergent DHC



Seed  
GLOBAL HEALTH



# Patient Case

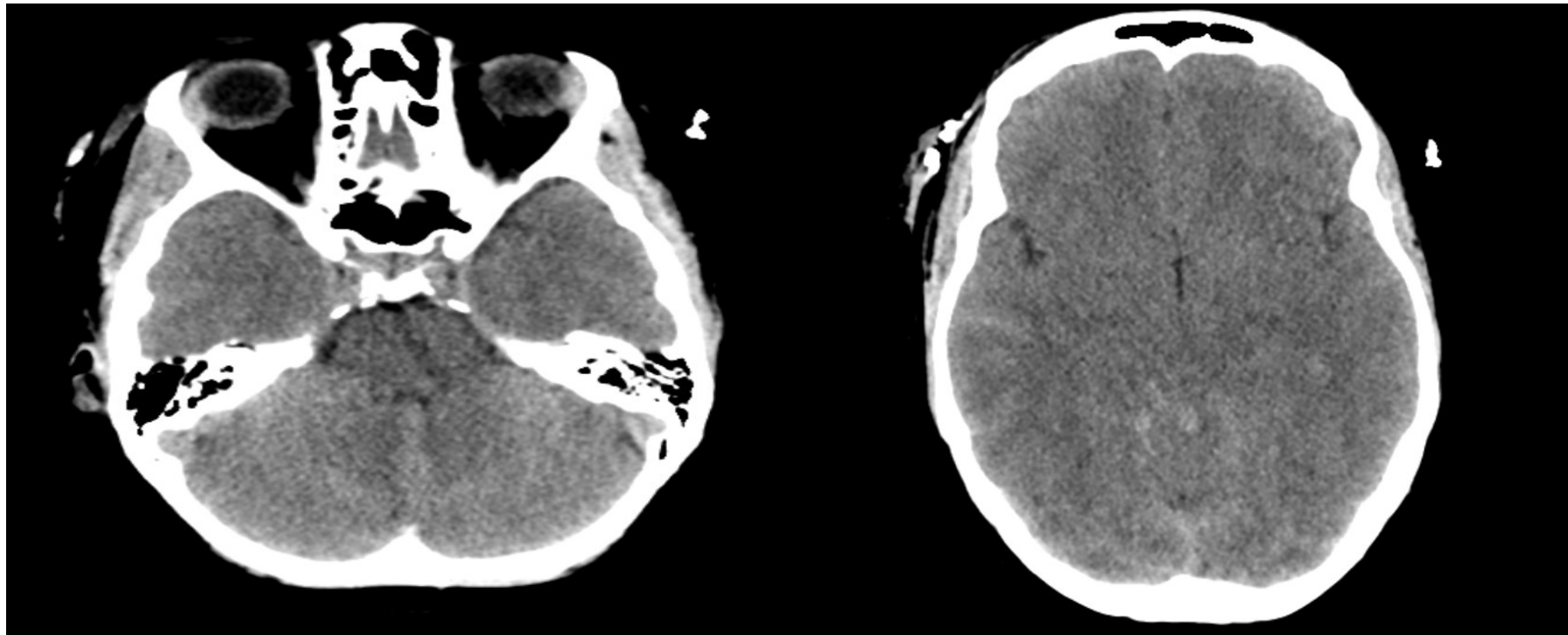
Mukasa John is a 30-year-old male involved in a high-speed motorcycle crash along Masaka highway, referred from Masaka RRH to Mulago NSH with diagnosis of polytrauma and severe TBI for Brain CT scan and Neurosurgical management. While in transit, he convulsed and his GCS reduced. The EMT handed over the patient to the ED team for further care



Seed  
GLOBAL HEALTH



# Brain CT Scan



# Essential skills

## Overall



- Assessing ABCDE
- Trauma Secondary Survey
- Cervical spine immobilization
- Head-tilt and chin-lift/jaw thrust
- Airway suctioning
- Management of choking
- Recovery position
- Nasopharyngeal (NPA) and oropharyngeal airway (OPA) placement



- Oxygen administration
- Bag-valve-mask ventilation
- Needle-decompression for tension pneumothorax
- Three-sided dressing for chest wound



- Intravenous (IV) line placement
- IV fluid resuscitation
- Direct pressure/ deep wound packing for haemorrhage control
- Tourniquet for haemorrhage control
- Pelvic binding
- Fracture immobilization
- Skin pinch test



- Full spine immobilization
- AVPU, GCS assessment
- Glucose administration



- Wound and burn management
- Snake bite management
- Log roll



Thank you